

LONDON
INTERNATIONAL
MIME
FESTIVAL



EYE-POPPING
VISUAL THEATRE
FOR THE
DIGITAL AGE

10 > 25 JAN 2009
MIMEFEST.CO.UK

Welcome to the London International Mime Festival's 31st edition featuring sixteen days of inspiring and unusual visual theatre by companies from America, Britain, France, Germany, Russia, Spain, and for the first time from Greece and China. Complementing the performance programme there are workshops, post-show discussions with the artists, and the 2009 festival lecture which will be given by movement theatre specialist Dick McCaw.

As always we are grateful to all our artists and venue colleagues. We are delighted to be collaborating with *barbicanbite09*, and *Paris Calling* - a Franco-British season of performing arts. Most importantly, we acknowledge the invaluable support of Arts Council England in realising LIMF09.

Joseph Seelig & Helen Lannaghan
Festival Directors

HELP WITH CHOOSING:

Family-Friendly Shows 5+
Circus Klezmer
Collectif Petit Travers
Tomas Kubinek

Shows Recommended for
Older Children 8+
Familie Floez
Les Apostrophés
Loup Pour L'Homme

Shows Using Circus skills
Circus Klezmer
Collectif Petit Travers
Les Apostrophés
Les Sept Planches de la Ruse
Mathurin Bolze & Hedi Thabet
Loup Pour L'Homme

Shows Using
Masks/Puppetry/Animation

Akhe
Buchinger's Boot Marionettes
Faulty Optic
Figurentheater Tübingen
Sharmanka

Shows for Adults Only
(inc all Shunt Vaults shows)
Akhe - both shows
Faulty Optic
RedCape Theatre
Sharmanka
Theatre of Silence/Ex Machina Athens

Shows with Some
Spoken Text

Akhe - Faust (English sur-titles)
Buchinger's Boot Marionettes
RedCape Theatre
Tomas Kubinek

BSL Interpreted Performances
Sat 24 Jan @ 8pm RedCape Theatre
Sun 25 Jan @ 4pm Tomas Kubinek

Show Advice for People Who Are
Deaf or Hearing-Impaired.
Festival shows are without
spoken text except:

Akhe / Faust (English sur-titles)
Buchinger's Boot Marionettes
(some spoken text)
RedCape Theatre
(BSL interpreted perf Sat 24 Jan)
Tomas Kubinek
(BSL interpreted perf Sun 25 Jan)

Meet the artists after the shows
Sun 11 Jan: Collectif Petit Travers
Mon 12 Jan: Figurentheater Tübingen
Wed 14 Jan: Buchinger's Boot
Thu 15 Jan: Ex Machina
Fri 16 Jan: Sept Planches
Mon 19 Jan: Akhe
Tue 20 Jan: Circus Klezmer
Wed 21 Jan: Les Apostrophés
Thu 22 Jan: Sharmanka & Faulty Optic
Fri 23 Jan: Tomas Kubinek
Sat 24 Jan: Familie Floez
Sat 24 Jan: RedCape Theatre

photos:
this page:
Aurélien Bory's
*Les Sept Planches
de la Ruse*
See pages 24-25

front cover:
Loup Pour l'Homme
Appris Par Corps
See pages 34-35



Southbank Centre's Purcell Room
Sat 10 > Tue 13 Jan

COLLECTIF PETIT TRAVERS

LE PETIT TRAVERS UK PREMIERE

Following its success at LIMF08, French new circus/juggling ensemble, Collectif Petit Travers, returns to the Southbank Centre with another UK debut show. Nicolas Mathis and Denis Fargeton are two highly-strung musicians living in a basement room. Trying to get along together is proving tough, tensions are rising and so is the water pressure...

Recently acclaimed at Pina Bausch's NRW Festival in Germany, *Le Petit Travers* features music, dark comedy and immaculately choreographed object manipulation. A magical seventy minutes for everyone and a definite must-see for contemporary circus and juggling fans.

Sat 10 > Tue 13 Jan
Sat/Mon/Tue 8pm, Sun 4pm
70 mins/no interval
After Show Discussion Sun 11 Jan
All seats £13.50 (limited concs)
Tickets: 0871 663 2527
Book online via mimefest.co.uk

Co-production: Le Lido, Centre des Arts de Toulouse,
Theatre de la Digue, Toulouse

Presented in association with Southbank Centre

Part of Paris Calling

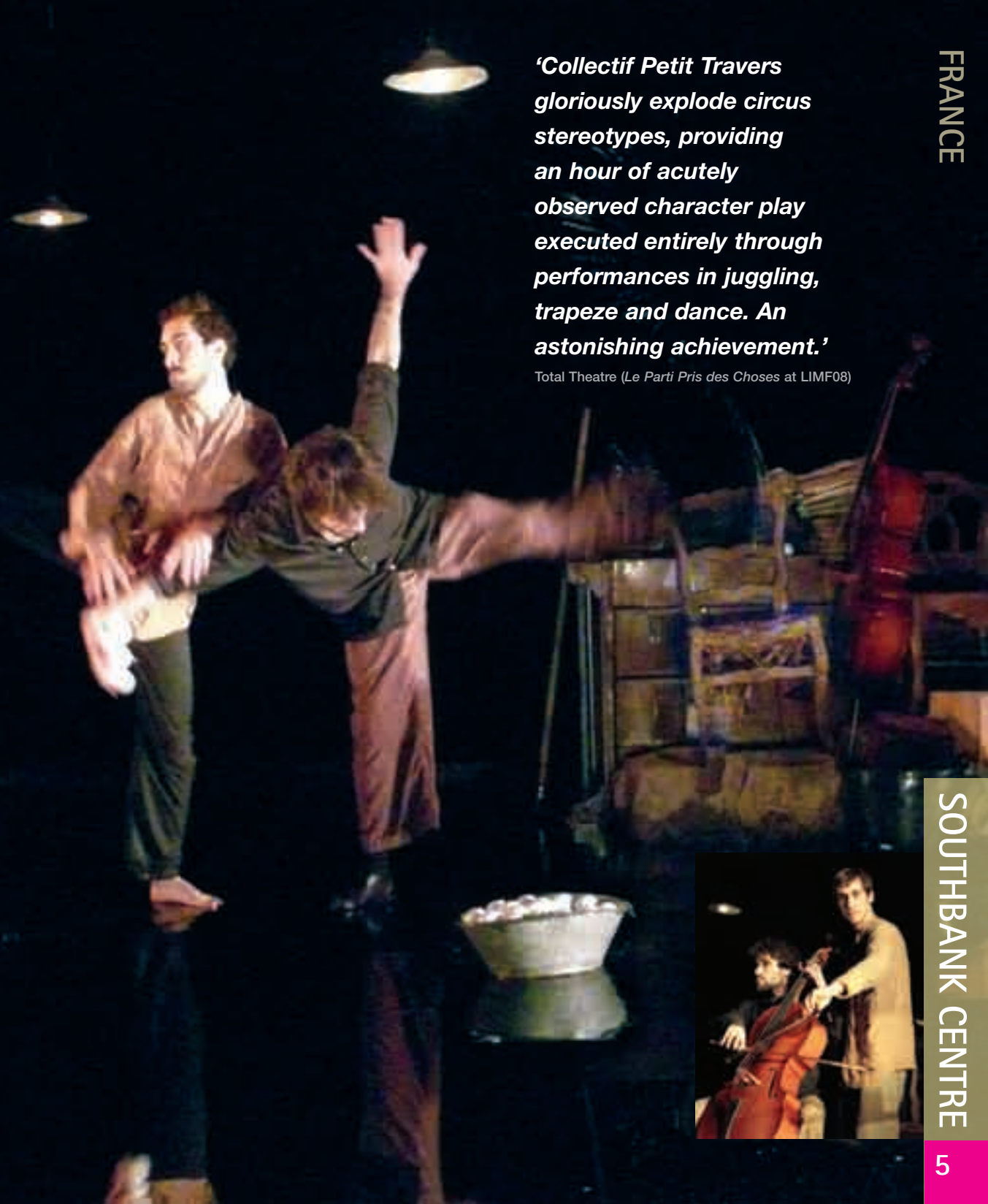
'Collectif Petit Travers gloriously explode circus stereotypes, providing an hour of acutely observed character play executed entirely through performances in juggling, trapeze and dance. An astonishing achievement.'

Total Theatre (*Le Parti Pris des Choses* at LIMF08)

FRANCE

SOUTHBANK CENTRE

5



Southbank Centre's Purcell Room
Thu 15 > Fri 16 Jan

THEATRE OF SILENCE EX MACHINA ATHENS

SEEKING OEDIPUS UK PREMIERE

From Greece, historic home of Mime, a gripping, wordless version of the Oedipus myth.

Performing on a steeply inclined plane, a six-strong ensemble play the protagonists linked to the cursed house of the Labdacides. This powerful interpretation of the famous tale of passion, patricide and incest was acclaimed at the Athens Epidaurus Festival in summer 2008 and has most recently been seen at the Macao Festival. Aspasia Kralli, who devised, directed and designed the production, studied at the Marcel Marceau School of Mimodrama. She is one of Greece's best-known actresses and featured in the movie, *Captain Corelli's Mandolin*.

Thu 15 > Fri 16 Jan 8pm
65 mins/no interval
After Show Discussion Thu 15 Jan
All seats £13.50 (limited concs)
Tickets: 0871 663 2527
Book online via mimefest.co.uk

Presented in association with
Southbank Centre

*'A great and serious
intellectual quest of this
momentous myth...
a must see!'*

Ta Nea (Athens)



Southbank Centre's Purcell Room
Sat 17 > Wed 21 Jan

CIRCUS KLEZMER

UK PREMIERE

The guests are assembled, the band is ready, there's food and drink galore. A nice Jewish village wedding, somewhere in Eastern Europe, but it's all going wrong as the rings are mislaid and the arguments start.

Circus Klezmer conjures up the bustling, noisy world of Emir Kusturica's *Time of the Gypsies* and Chagall's dreamlike paintings in this rollicking, circus-theatre entertainment. It's good-humoured, warm and atmospheric with a gallery of outrageous characters and irresistible live klezmer music. Never cried at a wedding? You will at this one!

Argentine-born director
Adrian Schwartzstein
previously appeared at
LIMF03 as a member of
Circus Ronaldo.

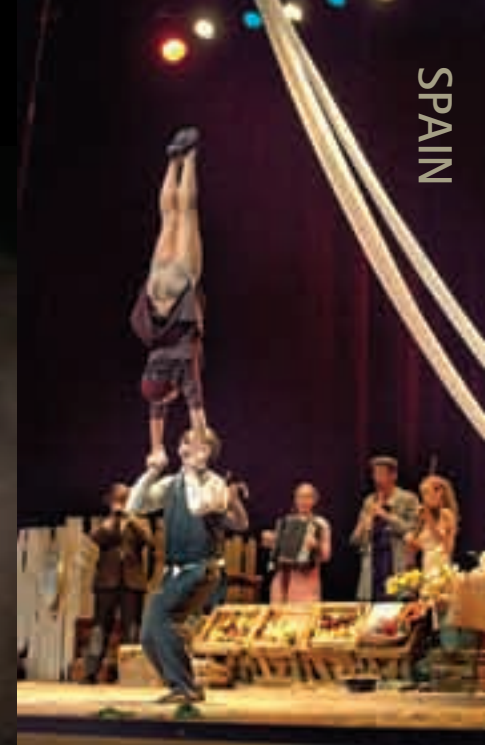
Sat 17 > Wed 21 Jan
Sat/Mon/Tue/Wed 8pm, Sun 4pm
Runs approx 70 mins/no interval
After Show Discussion Tue 20 Jan

All seats £13.50 (limited concs)
Tickets: 0871 663 2527
Book online via mimefest.co.uk

Presented in association with Southbank Centre

*'Full of humour,
poetry and virtuosity.
Don't miss it!'*

El Periodico



SPAIN

SOUTHBANK CENTRE

6

Southbank Centre's Purcell Room
Thu 22 > Sun 25 Jan

TOMAS KUBINEK

CERTIFIED LUNATIC AND MASTER OF THE IMPOSSIBLE

Virtuosic vaudeville and irresistible charm in equal parts, Tomas Kubinek's exuberant show features mind-boggling magic, surreally eccentric acrobatics, water-bubbling and much more. He was born in Prague, grew up in Canada, learned his skills in Europe from mentors such as Pierre Byland and Bolek Polivka and featured in one of The Right Size's early hits, *Moose*.

Self-styled 'doctor of dramatic diversions and curer of melancholia', this multi-talented entertainer will leave you with a comically altered view of life's creative possibilities. He's toured this unique collision of theatre and music-hall around the world, delighting audiences of all ages.



Thu 22 > Sun 25 Jan
Thu/Fri 8pm, Sat 6pm, Sun 4pm
Runs approx 90 mins/no interval
After Show Discussion Fri 23 Jan
BSL interpreted performance Sun 25 Jan
All seats £13.50 (limited concs)
Tickets: 0871 663 2527
Book online via mimefest.co.uk

Presented in association with Southbank Centre



'Absolutely expert'

New York Times

'Artful dodges and poetic bamboozlements performed with feline virtuosity and devilish wit.'

Louisville Courier-Journal

Southbank Centre's
Queen Elizabeth Hall
Fri 23 > Sun 25 Jan

FAMILIE FLOEZ

HOTEL PARADISO UK PREMIERE

After its sell-out successes with *Teatro Delusio* (LIMF05) and *Ristorante Immortale* (LIMF06), Germany's mask theatre experts Familie Floez return to the Festival with their latest silent comedy, an alpine thriller-chiller!

Strange things are happening at the Hotel Paradiso, a mountain spa resort whose staff, from kleptomaniac maid to cannibal cook, would not be out of place at Fawcety Towers, or even *Psycho's* Bates Motel. As the mysteries multiply, events spiral out of control.

Based in Berlin, the multi-award winning Familie Floez has generated huge interest in European mask theatre. Touring worldwide with its inimitable brand of visual comedy and repertoire of hit shows it has captured the hearts of old and young alike.

Suitable for 7 years +

Fri 23 > Sun 25 Jan
Fri/Sat 7.30pm, Sun 6pm
Runs approx 70 mins/no interval
After Show Discussion Sat 24 Jan
£13.50/£15.50/£17.50 (limited concs)
Tickets: 0871 663 2527
Book online via mimefest.co.uk

Presented in association with Southbank Centre

Also at Corn Exchange Newbury
Wed 21 Jan 7.45pm 01635 522 733



'Familie Floez draws us in to make us roar with laughter and shed a tear with their delightful blend of physical humour and pathos. Endearing and galvanising.'

British Theatre Guide

ICA Theatre
Sun 11 > Wed 14 Jan

FIGURENTHEATER TÜBINGEN

SALTO.LAMENTO UK PREMIERE

WITH LIVE MUSIC BY RAT'N'X

(JOHANNES FRISCH & STEFAN MERTIN)

A drawer opens... secret messages escape, trapping strange Centaur-like creatures, half man, half-beast. They force their way into the back rooms of memory where they meet a multi-faceted Death, effortlessly dancing, almost skipping. Reflecting the artistic tradition of the Dance of the Dead from medieval iconography, a cycle of poetic and bizarre metamorphoses unfolds.

Founded in 1991 by Frank Soehnle and Karin Ersching, Figurentheater Tübingen works at the intersection of puppetry, object theatre and live art. Far away from familiar theatre disciplines, both in their stage shows and many short films for TV culture channels 3sat and arte/ZDF, they continually break new artistic ground.

Sun 11 > Wed 14 Jan 8pm
Runs approx 65 mins/no interval
After Show Discussion Mon 12 Jan
All seats £13.50 (£11 concs)
Tickets: 020 7930 3647
Book online via mimefest.co.uk

Supported by the Goethe-Institut



'Soehnle charms his expressively masked and costumed figures into appearing as if from nowhere. The audience is spellbound, breathless, fascinated.'

Reutlinger Nachrichten



ICA Theatre
Thu 15 Jan

MATHURIN BOLZE + HEDI THABET

ALI UK PREMIERE

Mathurin Bolze and Hedi Thabet both trained as circus artists from a very young age. Humorous and touching, their unique performance at the festival celebrates friendship and the power of creativity. *Ali* runs just thirty minutes – perhaps the most inspiring half hour you will spend in the theatre this year. Its dynamic acrobatics feature a memorable creation with two heads, four arms and three legs amongst many images that will stay with you for a long time.

Hedi Thabet studied juggling and acrobatics and has worked in Belgium, France and Tunisia. Mathurin Bolze has worked with choreographers Josef Nadj and François Verret and previously appeared at the Festival with *Tangentes* and with his solo show, *Fenêtres*.

Thu 15 Jan 8pm
Runs approx 30 mins/no interval
All seats £10 (£8 concs)
Tickets: 020 7930 3647
Book online via mimefest.co.uk

Part of Paris Calling

Production: Compagnie les mains, les pieds et la tête aussi



*'They touch
the public's
heart with
laughter and
emotion.'*

La Presse, France



ICA Theatre
Sat 17 > Wed 21 Jan

AKHE ENGINEERING THEATRE

FAUST.2360 WORDS UK PREMIERE

Cult icons in the Moscow and St. Petersburg independent art scenes and sought after at festivals across Europe, Akhe creates a unique dream theatre of chaos. Filled with countless absurd and inspired events, its shows are packed with fantastic images and endlessly fascinating stage pictures.

Akhe returns to the Festival for the first time since its memorable *White Cabin* (LIMF04). Told in 2360 carefully chosen words, bizarre happenings, chemical experiments and trademark visual ingenuity, this explosive version of the Faust story is Akhe's latest show.

Performed in Russian, with English surtitles. Please be aware that smoking forms an integral part of this performance.

Akhe also performs its post-industrial cabaret *Plug'n'Play* at Shunt Vaults 14-15 Jan. See page 28

Sat 17 > Wed 21 Jan 8pm
Runs approx 60 mins/no interval
After Show Discussion Mon 19 Jan
All seats £13.50 (£11 concs)
Tickets: 020 7930 3647
Book online via mimefest.co.uk

Co-production: Akhe Engineering Theatre;
Kampnagel, Hamburg; NET Festival, Moscow

*'There is
theatrical magic
in this beguiling
display of visual
imagination.'*

The Independent
(*White Cabin*)

ICA Theatre

Thu 22 > Sun 25 Jan

REDCAPE THEATRE

THE IDIOT COLONY LONDON PREMIERE

Forgotten for decades inside a mental hospital three women escape their present by remembering their past. In the asylum's hair salon, to the strains of Rick Astley and Glenn Miller they relive wartime affairs, illicit trysts and childhood secrets.

Total Theatre Award and Fringe First winner at the 2008 Edinburgh Festival, *The Idiot Colony* is inspired by true accounts of the treatment and incarceration of 'moral defectives' in 1940s Britain.

RedCape Theatre is a new company comprising three performers, Cassie Friend, Claire Coaché and Rebecca Loukes, and writer Lisle Turner. The director is Andrew Dawson.

Thu 22 > Sun 25 Jan 8pm

Runs approx 65 mins/no interval

After Show Discussion Sat 24 Jan

(Led by Andrew Dawson)

BSL interpreted performance Sat 24 Jan

All seats £13.50 (£11 concs)

Tickets: 020 7930 3647

Book online via mimefest.co.uk

'A delicate work of damaged poetry and slow-moving grace. Beautifully accomplished... a remarkable debut.'

The Herald

'Endlessly inventive... thoroughly disquieting. It's stunning, you can't help but catch your breath.'

Metro

UK



ICA

Barbican, The Pit
Tue 13 > Sat 17 Jan

BUCHINGER'S BOOT MARIONETTES

THE ARMATURE OF THE ABSOLUTE

BY PATRICK SIMS UK PREMIERE

Think David Lynch's *Eraserhead*, Goya's hellish portraits or the world of the Brothers Quay. *The Armature of the Absolute* celebrates the groundbreaking ideas of French writer Alfred Jarry – creator of one of literature's most outrageous characters, the murderous King Ubu. More than 100 years since his death in 1907, Jarry's work still inspires and shocks.

Buchinger's Boot Marionettes' world is a chamber of wonders, a miniature fantasy land, distorting, disturbing, surreal and enthralling. They work with objects and figures made of recycled material, bone and wood, plants, insects and animals, all that enlightens, pleases and horrifies the eye. Anarchic and extraordinary in the best traditions of puppet theatre.

Buchinger's Boot Marionettes is an international ensemble currently based in Marseille. It previously appeared at the Mime Festival in 2007 with *Vestibular Folds*. To make its next production *The Old Man of the Mountain*, the group has been awarded a residency at La Chartreuse in Villeneuve les Avignon, the French Ministry of Culture's prestigious centre for new theatre writing.

Age guidance: 14+

Tue 13 > Sat 17 Jan 7.45pm
Runs approx 70 mins/no interval
After Show Discussion Wed 14 Jan
All seats £12
Tickets: 0845 121 6839
Book online via mimefest.co.uk

Production: Buchinger's Boot Marionettes,
with support from Ville de Marseille

Presented in association with barbicanbite09



'Terrifying, surreal and droll, this is simply great art. Modern and rock'n'roll. A sacrosanct homage to Jarry.'

Corse Matin (Corsica)

'Brilliant, lingering images... the show had exquisite specific cruelty and beauty.'

Daily Telegraph (on *The Vestibular Folds*)

Barbican Theatre
Wed 14 > Sat 17 Jan

AURÉLIEN BORY'S

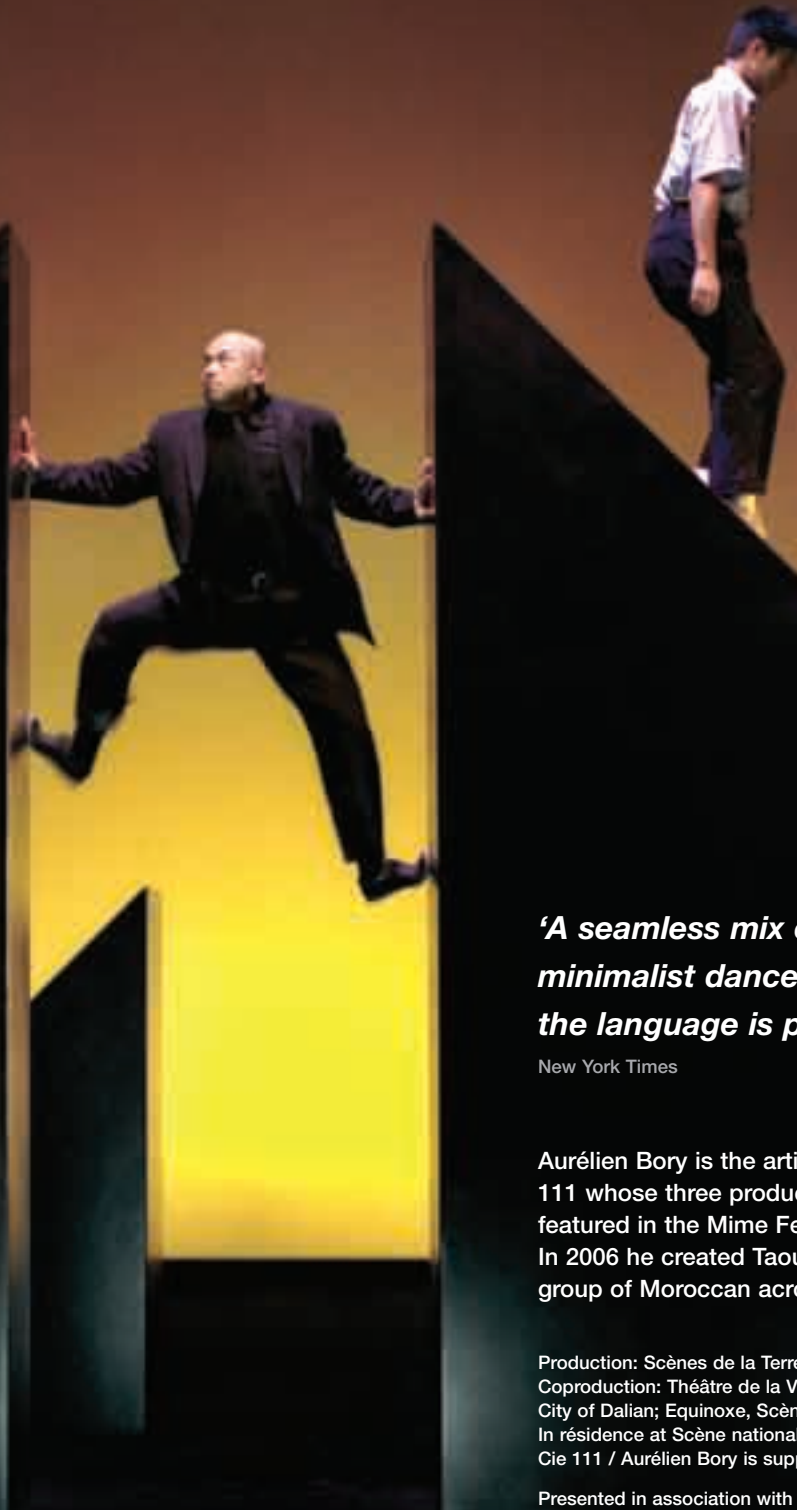
LES SEPT PLANCHES DE LA RUSE

UK PREMIERE

Les Sept Planches de la Ruse meaning 'The Seven Boards of Skill' is the spectacular new work conceived and directed by Aurélien Bory. Based on an ancient Chinese game, Tangram, a mind-bender in which seven different shapes are manipulated in almost infinite combinations, it demonstrates how geometry is capable of producing exquisite visual poetry.

On stage these giant interlocking forms are assembled and manoeuvred with incredible agility, strength and cunning by a team of fourteen performers from Dalian, China. They evoke abstract landscapes, terrifying ravines and sky-high city towers; they conjure monochrome urban images from Fritz Lang films or themes from Kafka; they are vivid metaphors for human experience. As the performers climb, balance, vanish into voids and new images evolve, the play of scale and form contrasting men and objects is stunning and dramatic.

Wed 14 > Sat 17 Jan 7.45pm
Runs approx 75 mins/no interval
After Show Discussion Fri 16 Jan
£10, £12, £16, £21, £26
Tickets: 0845 121 6839
Book online via mimefest.co.uk



***'A seamless mix of circus arts,
minimalist dance and visual art...
the language is pure geometry.'***

New York Times

Aurélien Bory is the artistic director of Compagnie 111 whose three productions to date have all featured in the Mime Festival and toured worldwide. In 2006 he created *Taoub* with a twelve-strong group of Moroccan acrobats, *Scènes du Maroc*.

Production: Scènes de la Terre. Cie 111
Coproduction: Théâtre de la Ville – Paris; Department of Culture, City of Dalian; Equinoxe, Scène nationale – Chateauroux.
In résidence at Scène nationale - Sénart.
Cie 111 / Aurélien Bory is supported by Fondation BNP Paribas

Presented in association with barbicanbite09
Part of Paris Calling

Barbican, The Pit
Tue 20 > Sat 24 Jan

LES APOSTROPHÉS

L'ÉCUME DE L'AIR

UK PREMIERE

Six years since his LIMF/bite03 appearance with juggling partner Jérôme Thomas, Martin Schwietzke returns with a brand new show, this time with musician, Michel Bismut. Full of mystery, joy and sensuality *L'Écume de l'Air* combines object manipulation artistry with Bismut's beautifully played original score – a mix of modern classical, jazz and warm Mediterranean sounds.

Creating an exquisite harmony of objects, space and music these two performers explore the intriguing relationship between sound and movement. It will engulf and enchant you. Martin Schwietzke is from Germany and a founder member of Les Apostrophés, a French-based company of circus-inspired artists. Tunisian-born Michel Bismut has played and recorded with many leading French and Spanish musicians.

Tue 20 > Sat 24 Jan
Tue-Fri 7.45pm, Sat 4pm
Runs approx 60 mins/no interval
After Show Discussion Wed 21 Jan
All seats £12
Tickets: 0845 121 6839
Book online via mimefest.co.uk

Production: Compagnie Les Apostrophés
Presented in association with barbicanbite09
Part of Paris Calling

*'A sensational concert piece
for juggler and double bass'*

Midi Libre, France

Shunt Vaults

Wed 14 > Thu 15 Jan

AKHE ENGINEERING THEATRE

PLUG'N'PLAY LONDON PREMIERE

Akhe's famous end-of-civilisation cabaret is a unique club night, with live DJ music.

'Akhe blows the audience's mood sky-high with a series of explosive sub-scientific cookery experiments involving apples, bananas, lemons, onions, garlic, vodka, yoghurt, meths, burning fuses, exploding lightbulbs, blazing fireworks, strangely reimagined parts of their own bodies and a can of Red Bull; they also paint a giant primitive self-portrait on the wall behind the stage, to be auctioned later.

The point about all this is that every second of it is presented with such flair, irony and perfect timing - plus a fabulous junkyard look, with rusty props hanging on strings overhead - that it emerges as that rarest of theatrical events, an hilarious piece of slapstick and disco anarchy that also seems to mean something in poetic and political terms'

THE SCOTSMAN

Wed 14 > Thu 15 Jan 8.30pm

Entry to show is included in Shunt Lounge admission fee of £5 and is subject to availability:

Doors open from 6pm.

Advance booking not available.

Akhe also performs *Faust.2360 Words* at the ICA Sat 17 > Wed 21 Jan 8pm



RUSSIA

SHUNT VAULTS

Shunt Vaults

Wed 13 > Sat 31 Jan (not Sun > Tue)

SHARMANKA

GOTHIC CIRCUS

LONDON PREMIERE

The product of Russian-born Eduard Bersudsky's astonishing imagination, craftsmanship and engineering skills, Sharmanka's kinetic sculptures and machines create dramatic sequences of movement, light and sound. Whirring and clanging, carved figures, junk-metal constructions and ancient household machinery are the protagonists in a thirty minute show about life and death, cruelty and beauty. Sharmanka's previous London appearances have been at The National Theatre (LIMF02) and subsequently at the Theatre Museum.

Wed 14 to Sat 31 Jan
(not Sun-Tue)

Wed-Fri: 6.30pm, 7.15pm,
8pm (not 22), 10pm (not 14)

Sat: 8.30pm, 10.30pm, 11.30pm
Runs 30 mins/no interval

After Show Discussion Thu 22 Jan
after the 7.15pm showing

Entry to show is included in
Shunt Lounge admission fee
and is subject to availability:
Wed-Thu £5; Fri-Sat £10.

Doors open from 6pm (8pm Sats).
Advance booking not available.

*'Is it theatre, visual art, puppetry or
a séance in a scrapyard? Eduard
Bersudsky is a mechanical genius'*

The Scotsman

'Go See'

The List



Shunt Vaults

Fri 16 > Sat 24 Jan (not Sun > Tue)

FAULTY OPTIC

FISH CLAY PERSPEX

INCIDENCES OF A QUIRKY KIND UK PREMIERE

World renowned for its haunting tales, visual theatre, strange animated figures and dark humour, Faulty Optic presents the eccentric, droll and compassionate new production, *Fish Clay Perspex*.

In this simple, small-scale, low-technology piece, Faulty Optic manipulates puppets, miniature and armless pointy-footed figures, clay, lagging, pens and plastic.

Fish Clay Perspex is a series of short character studies and incidences based upon chance, futility, expectation, doubt and the turmoil caused by the flailings and failings of the human mind.

Highlights include falling beasts, battered clay, bendy legs, bad drawing, frantic scribbling and the comic scabbling of a guileless duo. Escape normality, suspend your disbelief and enter the magical world of visual and surreal adult puppetry.

Fri 16 > Sat 24 Jan (not Sun-Tue)
Wed-Fri 8.30pm, Sat 9.15pm
After Show Discussion Thu 22 Jan
Runs approx 80 mins/no interval

Entry to show is included in Shunt Lounge admission fee and is subject to availability:
Wed-Thu £5; Fri-Sat £10.
Doors open from 6pm (8pm Sats).
Advance booking not available.



Clore Studio Upstairs at the Royal Opera House
Sat 24 > Sun 25 Jan

COMPAGNIE UN LOUP POUR L'HOMME

APPRIS PAR CORPS UK PREMIERE

Two young men explore their relationship through the language of acrobatics. There's tenderness and violence, attraction, loneliness and fear. The company's name plays with an ancient Roman proverb, 'man is a wolf to man', always preying on one another yet complicit and dependent. This powerful duet goes straight to the heart of the matter as it explores a web of complex emotions.

Frenchman Alexandre Fray and Québec-born Frédéric Arsenault were award-winners at the 2006 Jeunes Talents Cirque in Paris with this tour de force for two acrobats. Startling, daring and unusual their debut show creates a form of circus-theatre that goes way beyond mere physical prowess. Director, Arnaud Anckaert, is well known in France for his staging of plays by modern European writers including Daniil Kharms, Peter Handke and Enda Walsh.

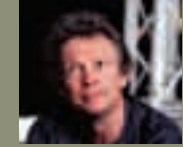
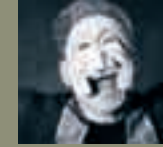
Sat 24 > Sun 25 Jan
Sat 7.45pm, Sun 4pm
Runs approx 55 mins/no interval
£13.50
(£10 concs: students and ROH Access Scheme)
Tickets: 020 7304 4000
Book online via mimefest.co.uk

Co-production: Les Migrateurs / Le Maillon / associés pour les Arts du Cirque – Alsace; Equinoxe, Scene nationale de Chateauroux; Culture Commune, Scene national du basin minier du Pas de Calais.

Part of Paris Calling



WORKSHOPS + LECTURE



HOW TO BE A STUPID

or The Clown's Intelligence
with Angela de Castro

Thu 8 - Sun 18 Jan
9.30am-6.30pm BAC -
Battersea Arts Centre,
Lavender Hill, London SW11 5TF

Bookings:
Email whynotinstitute@aol.com
Phone: 44 (20) 7739 8363

'How To Be A Stupid' is a unique workshop, a full time full-on course exploring the state of clown - an intense, inspiring, challenging and transformatory journey, with laughs and play along the way.

For Angela de Castro, clowning is not a technique but a 'state'. Through practical exercises and games, this energetic workshop helps you find your clown persona and experience it in this 'state'. It gives truthfulness and depth to your clowning, embracing the tragic as much as the comic. For actors and other performers, it helps make performance more real, individual and joyful. For beginners, it is a journey of discovery.

Angela de Castro is one of the most loved women clowns. She has been awarded fellowships with Nesta Dreamtime, the Arts Foundation and the Royal Scottish Academy of Music and Drama. She is well known for creating the Green Clown in Slava's *Snowshow*.

www.thewhynotinstitute.com

VIVA LA COMMEDIA

The Pillars of Physical Theatre
with Didi Hopkins and Ninian
Kinnear-Wilson

Sat 17 - Sun 18 Jan 10am-6pm
The Blue Room, Spirit Level,
Southbank Centre

£85 for the 2 days
Bookings: 0871 663 2527
Further information:
didi@dell-arte.co.uk

Explore the DNA and nuts and bolts of physical theatre with director Didi Hopkins and mask-maker Ninian Kinnear-Wilson. Discover the actor's role as author/editor/performer, how to play an audience, and what makes theatre work. Open to all who are interested in serious fun and need their energy and spirit ignited, this two-day workshop goes deep into the world of commedia. It looks at masks, characters, archetypes and comic scenarios - the roots and routes that make commedia a vital and important foundation of contemporary theatre. Suitable for all levels of experience. Participants must be over 18.

CREATING THEATRE AND PERFORMANCE

Led by Thomas Prattki

Sat 24 - Sun 25 Jan 10am > 5pm
LISPA
The Old Lab, Three Mills Studios,
Three Mill Lane, London, E3 3DU

£100 for the two days
Further information by email only:
welcome@lispa.co.uk

A new generation of performing artists is changing the landscape of modern theatre. What began a few decades ago as an avant-garde movement has changed the vision of mainstream theatre as well. The idea of the performer as a creator of her/his own work is no longer a fringe phenomenon, but reflects the broad desire of an entire generation of performers to develop their very own artistic voice and to take creative responsibility in shaping their vision of life.

Led by Thomas Prattki, founder and director of the London International School of Performing Arts (LISPA) this two-day physical and improvisational workshop will give an insight into the teachings of the school and its unique vision of an integral theatre pedagogy for the performing arts. Suitable for performers, dancers, actors, directors and teachers in the field of the performing arts with an interest in the idea of creating original work.

www.lispa.co.uk

2009 LIMF LECTURE: Dick McCaw

The Actor - A Reluctant Mover

Sat 24 Jan, 2.30pm
ICA Theatre
All seats £5
Tickets: 020 7930 3647
Book online via mimefest.co.uk

Dick McCaw's talk for LIMF09 examines the importance of movement to the actor's art. With reference to the work of Lecoq, Decroux and other 20th century masters it focuses on the work of Geraldine Stephenson, his own movement mentor (and coach to such well-known actors as Leonard Rossiter and Maureen Lipman) and in turn on her teacher - the legendary pioneer of movement and dance - Rudolf Laban. Dick McCaw co-founded Actor's Touring Company with John Retallick in 1978, and the Medieval Players with Carl Heap in 1981.

From 1993-2001 he was artistic director of the International Workshop Festival, programming an annual series of practical workshops with leading figures in the performing arts including Jacques Lecoq, Lev Dodin, Keith Johnstone, Katie Mitchell and Phelim McDermott. He is currently Senior Lecturer in Drama at Royal Holloway, University of London, a qualified Feldenkrais practitioner and is working on the Routledge Companion to Laban as well as The Complete Laban Toolkit for Nick Hern Books.

BOOKING

SOUTHBANK CENTRE

Southbank Centre's Purcell Room at Queen Elizabeth Hall

Southbank Centre's Queen Elizabeth Hall

For events on pages 5-13

Online: www.southbankcentre.co.uk (£1.50 transaction fee)

Limited concessions are available for each performance. Book early!

In Person: Royal Festival Hall 10am-6pm daily

No transaction fee
24 Dec closes 7.30pm,
25 Dec closed
26 Dec open 12 noon-8pm
31 Dec open 10am-6pm
1 Jan open 12 noon-8pm

By Phone: 0871 663 2527
9am-8pm (£2 transaction fee)
Closed 25, 26 Dec & i Jan

By Fax: 0871 663 2587
(£2 transaction fee)

Access Information:
0871 663 2587
accesslist@southbankcentre.co.uk

Tube: Charing Cross, Embankment, Waterloo



Institute of Contemporary Arts (ICA) The Mall SW1Y 5AH

For events on pages 15-21

Online: www.ica.org.uk

In Person: Mon-Sun 12 noon-9.15pm (most busy 6-9pm)
Christmas closure: 24-26 Dec, 31 Dec, 1 Jan

By Phone: 020 7930 3647

By Post: ICA Box Office, The Mall, London SW1Y 5AH.
Cheques to 'ICA Ltd'
Please include s.a.e

Tube/Train: Charing Cross, Embankment, Piccadilly



Barbican Theatre & The Pit, Barbican Centre, Silk Street, EC2Y 8DS

For events on pages 23-27

Online: www.barbican.org.uk
reduced booking fee

In Person: At the Advance Box Office, Silk Street entrance, ground floor (Level 0), Mon-Sat 9am-9pm, Sun 12 noon-9pm.
Christmas closure: 24-25 Dec.
Open Boxing Day 4-8pm.

Students half price Wed eves, proof of eligibility required.

Access: www.barbican.org.uk

By Phone: 0845 121 6839
Mon-Sat 9am-8pm, Sun 11am-8pm. Admin fee £2 per transaction. Tickets sent by 1st class post, time permitting.

By Post: Box Office, Barbican Centre, Silk Street, EC2Y 8DS
Cheques payable to 'Barbican Centre'. Please include s.a.e or add 50p to cover postage.

Tube/Train: Barbican, Moorgate



Shunt Vaults entrance is via a little door on Joiner Street in London Bridge tube station London SE1

For events on pages 29-33

Tickets: at the door only
020 7378 7776 for info or www.shunt.co.uk

Entry: Wed-Fri: 6-11pm, Sat 8-11pm, but once inside the bar is open late!
Day membership: £5 Wed+Thu, £10 Fri+Sat
Cash only. No credit cards.

NB it is not possible to book in advance for Shunt Lounge events - just come along on the night and pay on the door.

FOR THE LONDON INTERNATIONAL MIME FESTIVAL

Tel: 44 (0) 20 7637 5661

Email: mimefest@easynet.co.uk

35 Little Russell Street, London WC1A 2HH

Directors:	Helen Lannaghan & Joseph Seelig
Artists' Manager:	Silvia Maroino
BSL Interpreters:	Jeni Draper & Anna Curd
Discussions Facilitator:	Dick McCaw
Marketing Consultants:	Mobius Industries (020 7836 3864)
Press Representatives:	Arthur Leone PR (020 7637 2994)
Production Manager:	Bill Deverson
Brochure/Web Design:	Iain Lanyon at keanlanyon.com
Printed by:	Axis axisonline.co.uk

PHOTO CREDITS:

Akhe's Faust © Vladimir Telegin • Bolze/Thabet © Stephane Rouaud & Ali Thabet • Buchinger's Boot Marionettes © Mafalda da Camara • Loup Pour L'Homme © Riccardo • Musacchio & Flavio Ianniello • Collectif Petit Travers © Aude Poirot • Ex Machina Athens © K. Kalivretakis • Famille Floez © Silke Meyer • Figurentheater Tübingen © Klaus Kühn • Les Apostrophés © Patrick Chamayou • Les Sept Planches de la Ruse © Aglaé Bory • RedCape Theatre © Dave Yates • Sharmanka © Robin Mitchell • Tomas Kubinek © d.a. hill & Bruce Leseur



Clare Studio Upstairs at the Royal Opera House
Covent Garden WC2E 9DD

Compagnie Un Loup pour l'Homme, page 34

Online: www.roh.org.uk

In Person: Mon-Sat 10am-8pm
The Box Office is in the Link, connecting Bow Street to Covent Garden Piazza.
Christmas closure: 24-25 Dec

By Phone: 020 7304 4000
American Express, Diners Club, Mastercard, Maestro or Visa

By Post: PO Box 6, Covent Garden, London WC2E 7QA.
Cheques payable to 'Royal Opera House'

Tube: Covent Garden

HOW TO GET THERE

Full details are at each venue's website, and through Transport for London: www.tfl.gov.uk

THANK YOU

The 2009 London International Mime Festival gratefully acknowledges co-operation/financial support from: Arts Council England; the Goethe Institut, London; Institut français du Royaume-Uni, CULTURESFRANCE and Paris Calling; Southbank Centre (reg'd charity).



BOOK ONLINE VIA WWW.MIMEFEST.CO.UK

Online booking links, slideshows, downloadable pdf of this brochure, largertext page, free mailing list, links to Company websites with videos and much more!

NEED
LARGER TEXT?
PHONE US ON
020 7637 5661